



More than
just a
camera...

The future of
security is here:
the InVue Cam
Intelligent Still Image
Security System.

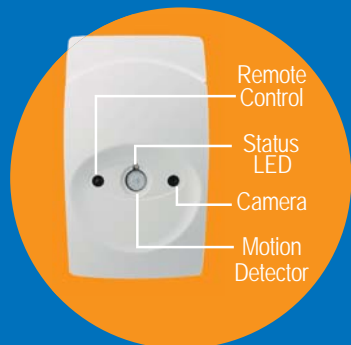
Compact and
lightweight, the
InVue Cam
provides top-level
security anywhere,
anytime.

Perfect for the home, office
and small business. Use
inVue^{cam} to monitor...

- Office reception area
- Cash register/till
- Stockroom
- Retail shop
- Manager's office
- Home living areas
- Pool + yard
- Front door + windows
- Boat
- Carpark + driveway
- Front gate
- Shed + workshop

**inVue^{cam}**

How the **inVue^{cam}** works



Inside the InVue Cam is a colour CMOS digital camera, motion detector and remote control receiver. The unit is controlled by a powerful 32 bit RISC video processing engine.



When the unit detects motion, it automatically begins recording a series of still images and saves them to a memory card.



The images saved to the InVue Cam's memory card can then be downloaded to a computer or PDA and viewed. InVue Cam can be operated by remote control.

More than just a camera...



Whether you're security conscious or just curious about what happens on your property, the InVue Cam fulfills all your needs.

Even before motion is detected, the InVue Cam is hard at work recording 'pre-trigger' images at programmed intervals. Then, when the motion sensor is triggered, InVue Cam records a series of full colour images in rapid succession until the movement stops.

Users have full control over the quality, timing and the number of images captured, which are optimised and stored as JPEG images on a removable memory card. Each image contains time/date stamping, plus a unique tamper proof digital signature for verification. The InVue Cam comes with one 2GB memory card which holds up to 32,000 VGA images (65,000 QVGA images!)

InVue Cam can also work as part of an existing security monitoring system, activating alarms while still capturing photographic evidence of an intruder.

When you can't be there, get InVue Cam to keep an eye out for you.

inVue^{cam} features + benefits:

- 👁️ **Easy** to install and use
- 👁️ The most **economical colour digital camera system available**
- 👁️ **Independent** operation or **combined** with existing systems
- 👁️ Advanced infrared **motion detector**
- 👁️ **Rapid image capture** and compression
- 👁️ **Automatic setup of camera** from memory card
- 👁️ **Complete user control** over image size/resolution, frame timing sequence, and number of images captured
- 👁️ **External trigger** (such as cash drawer or door)
- 👁️ Accepts **MMC™ or SD™** cards
- 👁️ **2GB card** holds up to 32,000 VGA images; or up to 65,000 QVGA images
- 👁️ **USB SD Reader**
- 👁️ Each image **stamped with time/date and digital signature**
- 👁️ **Remote control** to arm, disarm and take photo
- 👁️ **Internal high capacity battery 9 weeks standby**
- 👁️ **Pre-trigger capture (PTC)**

Technical Specifications

Image Type	Colour or B&W, JPEG compressed VGA (640x480pixels), QVGA (320x240)	External Power Supply	9VDC to 13.8VDC, 250mA (Plug tip polarity + or -)
Camera Lens	Standard: 3.7mm, 54° horizontal, 39° vertical	Internal Battery Capacity	High Capacity (HC) - Lithium Ion, 3.7V 3000mAh
Image Sensor Sensitivity	Colour: 3.8 V/Lux-Sec B&W: 4.9 V/Lux-Sec	Photo-Relay Specifications	60VDC, 400mA
Motion Sensor	Type: PIR Range: 0 - 5m (minimum), 0 - 12m (typical) Field Of View: 100° horizontal, 82° vertical	Power Consumption	Standby: 1.9mA Running: 100mA Charging: 200mA
Memory Card	MMC™ Card (v4.2) or SD™ Card (v1.1) FAT 16 file format	Case Dimensions	116 x 67 x 55 mm
Storage Capacity	2GB Memory Card: VGA: 32,000 images, QVGA: 65,000 images	Weight	172g incl. battery
		Operating temperature	-20°C to +60°C (-4°F to +140°F)
		PC Software Requirements	Windows 2000 (SP4), Windows XP (SP2), Windows Vista

Australian designed & manufactured

Specifications are subject to change without notice. Patent pending

Parts & Accessories

Easy to set and use...



This external weatherproof case for the InVue Cam enables the camera to operate in harsh, dusty outdoor environments such as mines, farms, forests, beaches etc. The case is manufactured out of high quality polycarbonate for maximum UV resistance, and is IP65 rated.

IVCEWC



1. Position

Tiny, wire-free camera is small, light and totally portable!



2. Arm

Use the remote to arm/disarm, or program to switch on automatically.



3. Download

View the memory card images on a PC or PDA.



IVCSFH45

These rugged stainless steel mounting case for the InVue Cam prevents unauthorised access to the memory card. Ideal for applications where vandalism, graffiti or criminal activity may be a problem.

Create a unique "wire-free" surveillance camera without the need for expensive bungee cables to add a camera to a lift!

IVCSCH01

This white mounting bracket is designed to position the InVue Cam and PIR detectors over a wide range of angles. The unique omni-directional ball joint with hand locking nut allows the camera to be positioned at specific angles for surveillance applications.

IVCMB01



IVCKIT05

The InVue Camera & Siren Strobe Alarm Kit is a battery powered standalone alarm system. An ideal security solution for remote sheds, boats, caravans, rental offices or units.

Kit includes: InVue Cam standalone surveillance camera, internal backup battery, siren-strobe alarm module, 2 remote controls, 12V power supply, 2GB memory card, and card reader.



IVCSDUSB
USB SD READER



IVCREM
INFRA-RED REMOTE CONTROL



IVCSD2GB
SANDISK 2GB SD CARD



IVCBCPS
BATTERY CHARGER &
POWER SUPPLY



IVCBAT02
BATTERY (XHCB) 12.5Ah
EXTRA HIGH CAPACITY



IVCBAT01
BATTERY (HCB) 3Ah
HIGH CAPACITY

More than just a camera...

InVue Cam software will allow you to...



Camera configuraton

- 👁 The InVue Cam setup software enables the user to configure the camera with 26 different options.
- 👁 The image viewer with variable speed movie feature allows users to quickly find the images of interest.
- 👁 Decryption of images.
- 👁 View the detailed InVue Cam event log.

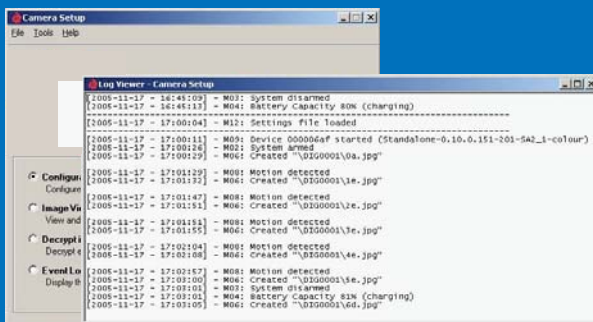


Image viewer

- 👁 In most surveillance applications, the memory card can store up to 65,000 images!
- 👁 The image viewer enables the user to quickly view a large number of images by either the up/down arrow cursor keys or the variable rate movie feature.
- 👁 When the images of interest have been located, they can be selected via a check box and then after all images have been viewed, they can be copied to a directory of choice. This means the card only needs to be scanned once!

Event log viewer

- 👁 The Camera creates a log which records every event that occurs while the camera is in operation.
- 👁 Each event is time and date stamped and includes a detailed description.
- 👁 The viewer enables the user to quickly scan the contents and confirm exactly what has occurred.
- 👁 The available battery capacity is displayed as a percentage.



Encryption

- 👁 This option enables the user to secure the photos stored on the memory card to prevent anyone else from viewing them.
- 👁 The encryption process requires the user to enter a password which is used as part of the key and the files are given a ".ENC extension"

