

LEGGE

700 Marine Series

Door furniture



The Legge 700 Marine Series door furniture has been designed for heavy duty commercial applications. This Series is constructed from 316 marine grade stainless steel making it suitable for both external and internal applications. It is suitable for use in high traffic applications such as retail, educational, government buildings, healthcare and commercial premises.

The handing mechanism of this Series allows the furniture to be handed on site, prior to installation by rotating the lever to the preferred hand and fitting the stop block to secure it's position.

316 Satin Stainless Steel properties include:

- Increased wear resistance
- Corrosion resistant
- Suitable for coastal applications
- Suitable for areas where hygiene is important

Features

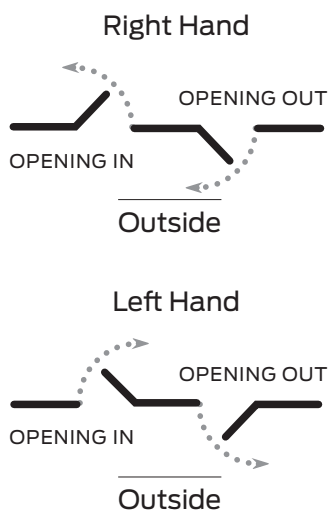
- Constructed of quality components, with cast 316 grade stainless steel levers and plates
- The heavy duty spring provides a smooth, fast return action of the lever and eliminates droop extending the life of the furniture
- Symmetrically designed levers are able to be handed on site prior to installation, by rotating the lever and fitting the stop block to secure it's position
- The 30 year warranty provides specifiers and users with assured quality and performance
- The Alpha lever is AS1428:1-2009 compliant

Specification guide

<p>L Brand</p> <p>Legge.....L</p>	<p>A Lever Design</p> <p>Alpha.....A</p>	<p>502 Plate Function Code</p> <p>refer following pages</p>	<p>S Finish</p> <p>316 Satin Stainless Steel SSS</p>
---	--	---	--

- 1. Brand**
Select the brandL
- 2. Lever Design**
Select the desired lever design
e.g. Alpha LA
- 3. Plate Function**
Select the required plate function
e.g. 502 external plate with cylinder hole LA502
- 4. Finish**
Select the desired finish
e.g. Satin Stainless Steel LA502SSS

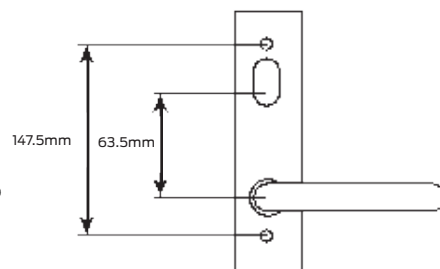
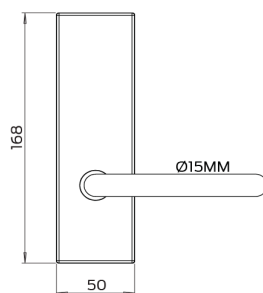
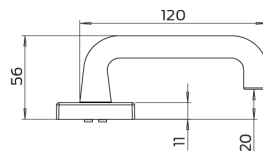
Handing guide



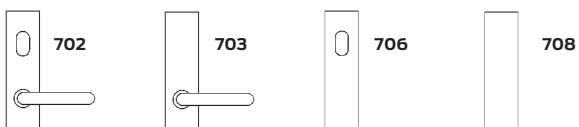
Specifications	
Door type	Timber or metal
Door thickness	32mm to 50mm
Fixing centres	147.5mm
Spindle size	7.6mm
Compatible locks/latches	Legge 990MF Series mortice locks
Fixing	External plates concealed, internal plates visible fix (screws supplied with exterior plates only, screw length 75mm)
Materials	Cast 316 grade stainless steel
Finishes	Satin stainless steel
Warranty	30 year mechanical

Legge 700 Marine Series

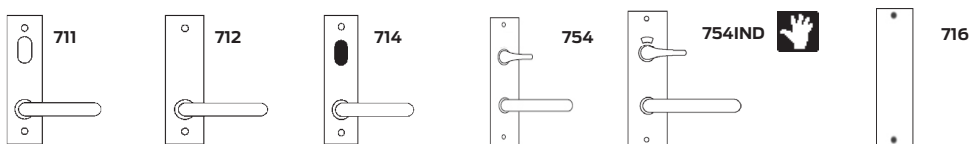
Alpha #29



External plates



Internal plates



Legend

Turn snib



Cylinder hole



Emergency button



Accessible turn



Denotes handed lever